

**LOYOLA COLLEGE OF SOCIAL SCIENCES  
THIRUVANANTHAPURAM**



**CRITERIA 7: Institutional Values and Best Practices**

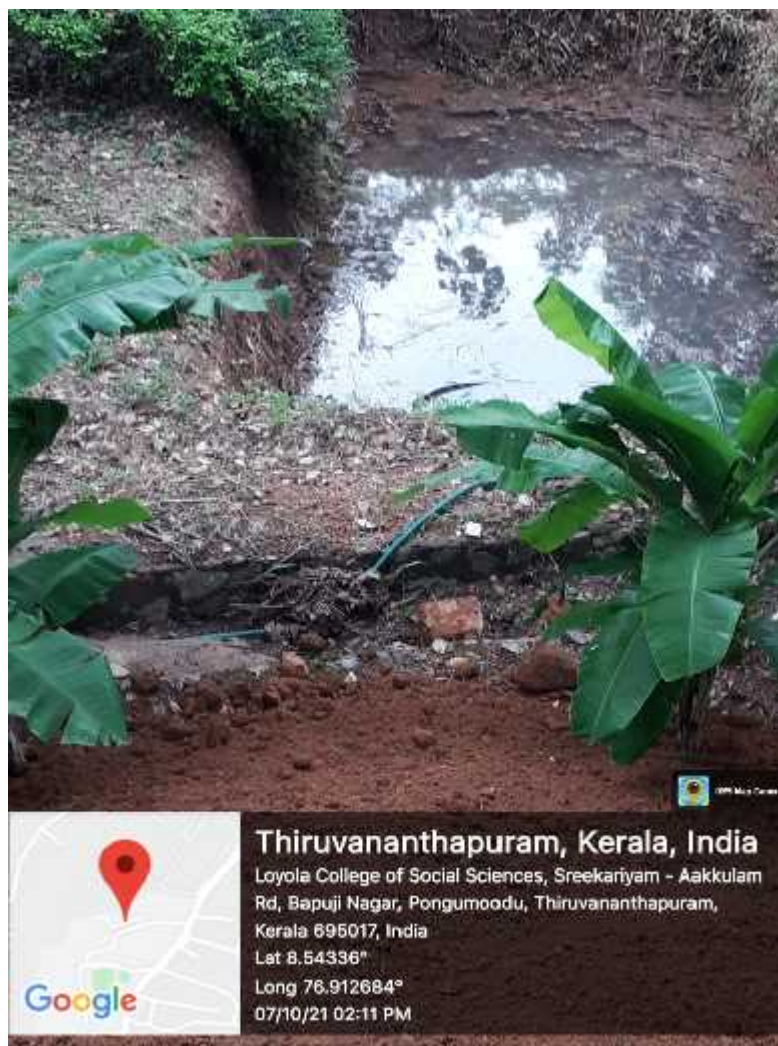
**7.1.4-1 Geotagged Photos of Water Conservation Facilities**

**Water Conservation Facilities Available In the Institution:**

<b>Sl.No</b>	<b>Available Water Conservation Facilities</b>	<b>Page Number</b>
<b>1.</b>	<b>Rain water harvesting</b>	<b>2</b>
<b>2.</b>	<b>Bore well</b>	<b>3</b>
<b>3.</b>	<b>Maintenance of water bodies and distribution system in the campus- Construction of tanks and bund</b>	<b>5</b>

## Rain Water Harvesting Pit

Rainwater harvesting pits are installed in our campus as part of environment management and biodiversity inspiring from the concepts of green Campus Initiatives. This Percolation pit is one of the easiest and most effective means of harvesting rainwater.



## Bore Well

Bore well is one of the main sources of water supply available in the institution. The available bore well is used for college building and boys' hostel. It is also used for gardening and landscaped areas in the campus.







### Thiruvananthapuram, Kerala, India

Loyola College of Social Sciences, Sreekariyam - Aakkulam Rd, Bapuji Nagar, Pongumoodu, Thiruvananthapuram, Kerala 695017, India  
Lat 8.54336°  
Long 76.912684°  
14/12/21 12:47 PM



## Maintenance of Water Bodies and Distribution System in the Campus

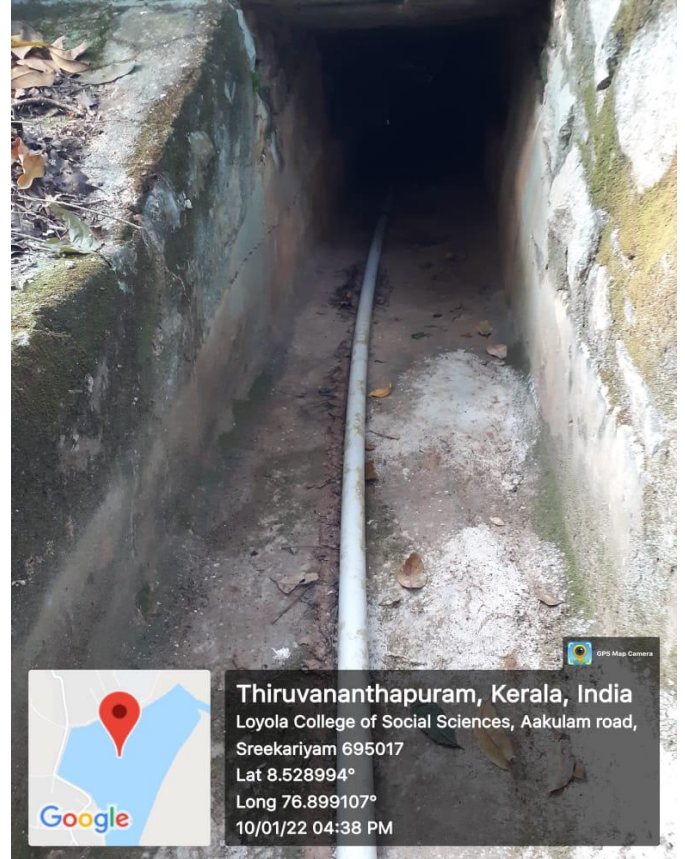
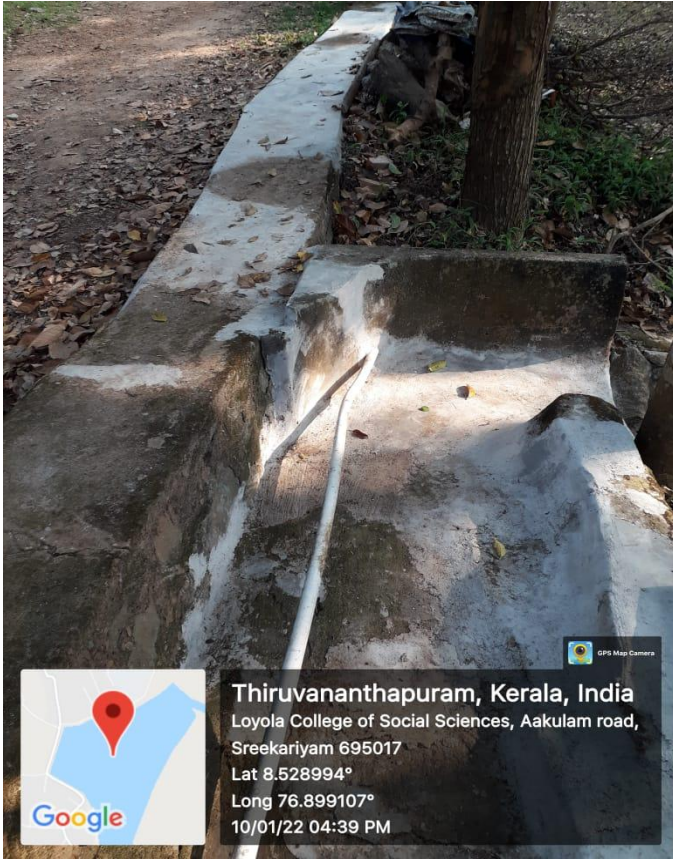
### Construction of tanks and bunds

As the water crisis continues to become severe, there is a dire need of reform in water management system. As a part of water conservation system, the institution has built Check Dams to collect and store the rainwater for reuse on-site, rather than allowing it as run off.

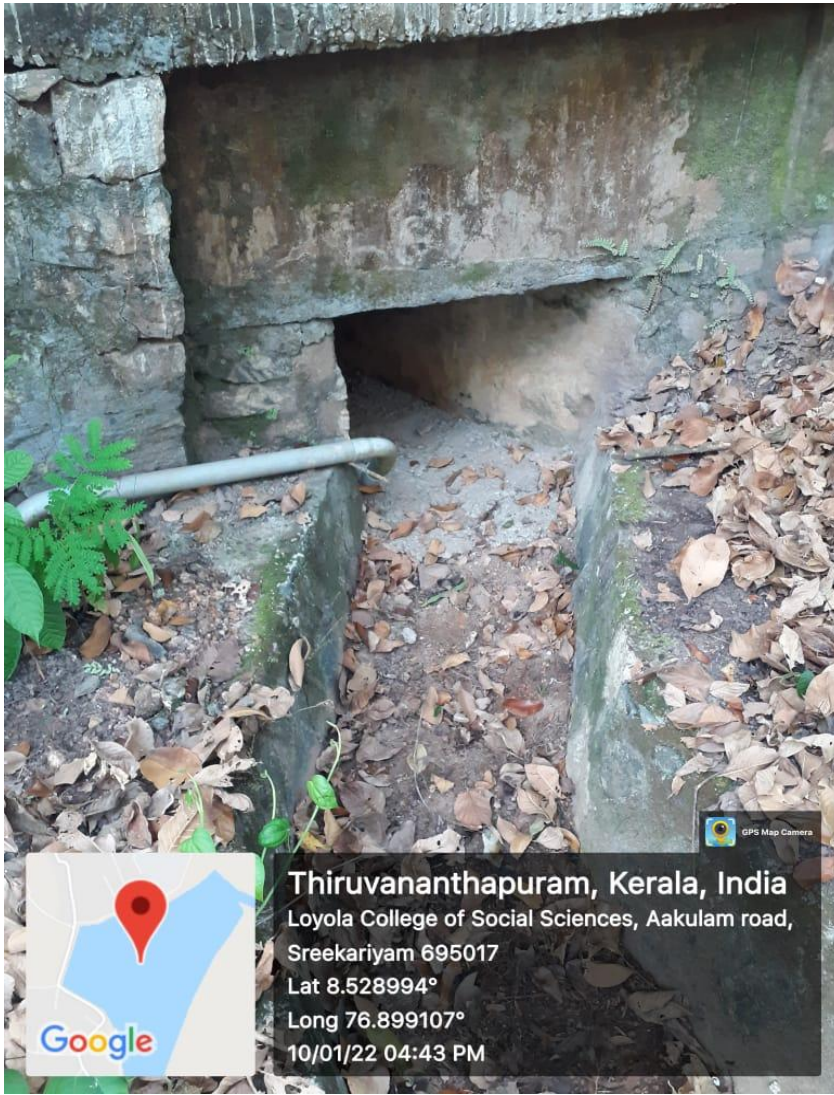
The flow of water passage is represented below:











**Thiruvananthapuram, Kerala, India**  
Loyola College of Social Sciences, Aakulam road,  
Sreekariyam 695017  
Lat 8.528994°  
Long 76.899107°  
10/01/22 04:43 PM



**Thiruvananthapuram, Kerala, India**  
Loyola College of Social Sciences, Aakulam road,  
Sreekariyam 695017  
Lat 8.528994°  
Long 76.899107°  
06/01/22 04:44 PM



